

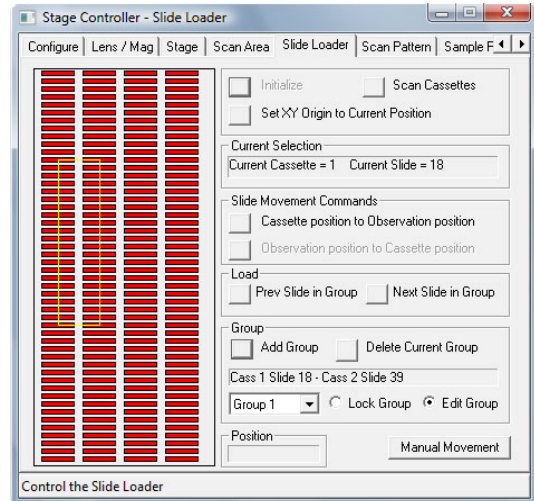
Image-Pro® 7.0.1 software now supports the PL-200 automated slide loading system from Prior Scientific.

The PL-200 is now fully controlled using Image-Pro 7.0.1 making it now possible to truly automate the digital imaging of microscopic specimens using precision scanning stages and automated loading and unloading of samples. The new hardware compatibility included with all Plus versions of Image-Pro 7.0.1, using Scope-Pro, make it possible to automate simple and advanced routines either manually operated or using Image-Pro's exceptional scripting language. Macro writers have an opportunity to create fully automated slide handling systems. The supported versions include Plus, Inspector, MDA, 3D, and AMS. The PL-200 is designed to be compatible with the



widest range of upright and inverted microscopes in routine use today, by utilizing a space saving rotating

arm design combined with a multiple sensory based gripper system to interface with Prior's ProScan II series of motorized stages. This combination ensures a safe and reliable high speed slide transfer routine. Each 200 slide capacity scan, transfer, reload, or rescan can be seamlessly handled and easily configured and reconfigured using Image-Pro's Scope-Pro hardware interface. Simple color coded slides tell you where slides are located in the rack, and by a simple click of the mouse a slide can be easily moved into an accurate position. This driver is included with every Plus version of Image-Pro Plus 7.0.1 and can be accessed from the Scope-Pro Hardware Configuration and can also be accessed from the support site using the following link <http://support.mediacy.com/scopedrivers.asp>.



For more information from Prior: <http://www.prior.com/products-by-industry/index.html?cid=599&pid=4871&parents=75%2C599>